

## "Broken Harmony"

Broken harmony represent a striking exploration of the neofuturistic movement, utilizing sheet metal as the primary medium. These sculptures are meticulously cut, bent, welded, and spray-painted by hand, resulting in intricate wall sculptures that embody a captivating fusion of form, movement, and theme. Michael Ritzmann's artistic vision is rooted in the concept of "broken harmony," evident in the intentional inclusion of subtle glitches in color and shapes within the optical approach.

The use of sheet metal as a sculptural medium is significant, as it allows him to achieve a balance between strength and malleability. The sheets are expertly manipulated, with precise cuts and bends that give rise to intricate, three-dimensional forms. The resulting sculptures possess a sense of dynamism and energy, reflecting the neofuturistic ethos that embraces technological advancement, movement, and a visionary aesthetic.

The handcrafted nature of Ritzmann's process adds a layer of intimacy and meticulousness to each sculpture. The artist's personal touch is evident in the weld marks, showcasing the dedication and skill required to bring these metal fragments together into cohesive compositions. The spray-painted surfaces further enhance the visual impact of the sculptures, allowing for the exploration of a diverse range of colors and textures.

The artist incorporates deliberate glitches in both color and shape. These subtle imperfections disrupt the expected harmony of the sculptures, injecting an element of unpredictability and visual tension. This thematic exploration of "broken harmony" challenges conventional notions of perfection and symmetry, inviting viewers to contemplate the inherent beauty found within imperfections and disruptions.

By engaging with the neofuturistic movement, these sculptures contribute to a broader artistic conversation that reimagines the future through the lens of technology, innovation, and fluid forms. The interplay between precision and spontaneity, created through the meticulous manipulation of sheet metal and the intentional glitches.

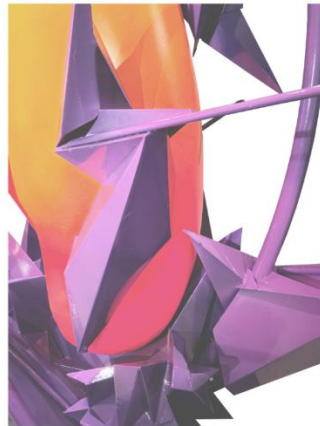
Ritzmann's artworks beckon viewers to embark on a journey of visual discovery, where the juxtaposition of strength and fragility, order and disruption, converge to form a new understanding of harmony. The intentional glitches serve as reminders of the complexity and imperfections inherent in our human experience, prompting contemplation on the delicate balance between chaos and order. Ritzmann's sculptures are a testament to the transformative power of art, as they invite us to reconsider our preconceived notions and embrace the beauty that lies within the fractures of harmony.





**"oocyte trisiomorphe"**

**spraypainted mixed media sculpture  
300x250x130cm  
2024**



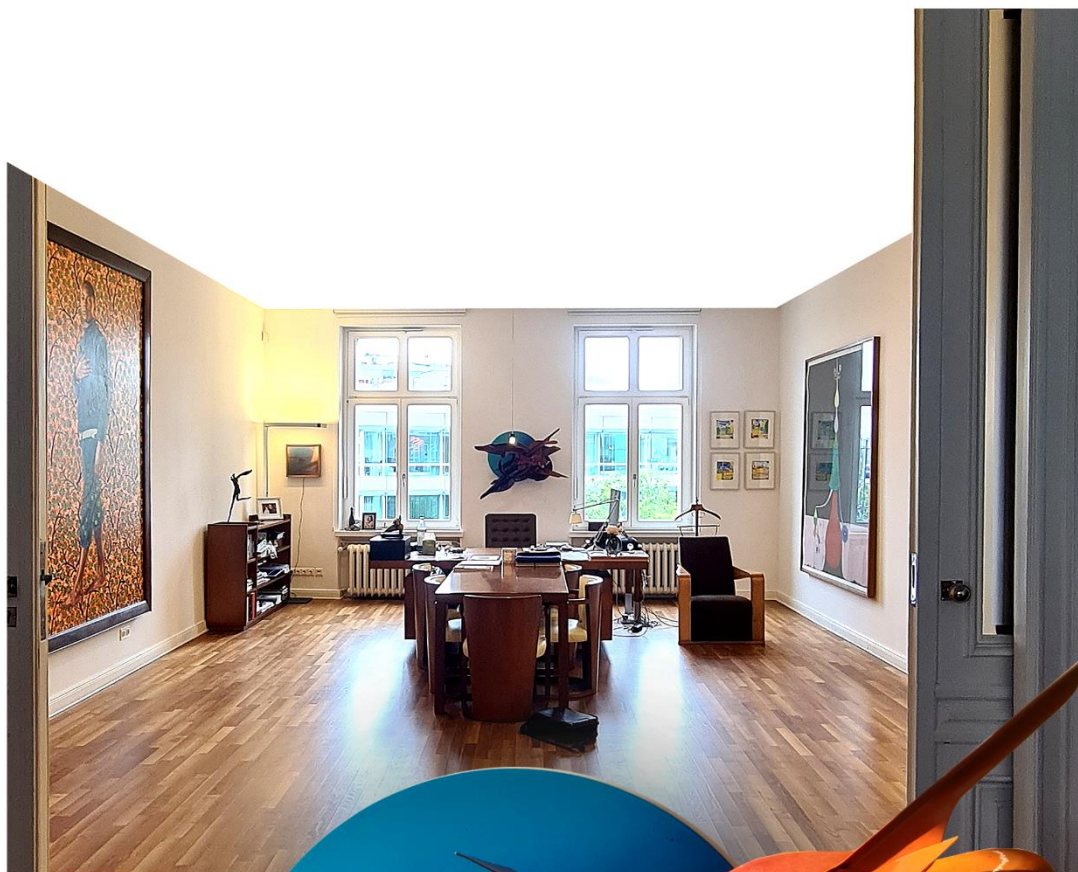


**"nucleolus inviticus"**

**spraypainted steelsculpture on  
wooden plate  
220x15x70cm  
2023**







**"vortex 23p13"**

**spraypainted steelsculpture on wooden plate  
100x100x50cm  
2023**



**"vectorvortex 21p11/in between"**

**spraypainted steelsculpture  
100x130x30cm  
2022**



**"vortex 22p16/ripped eye steak"**

**spraypainted steelsculpture  
on wooden plate  
100x100x75cm  
2022**





**"vortex 22p13/homozygotis"**

**spraypainted steelsculpture  
on wooden plate  
130x50x40cm  
2022**





**"rrrazorblad3"**

**spraypainted mixed media sculpture  
160x170x40cm  
2022**

**"Vortex 21p13"**

**spraypainted steelsculpture  
on wooden plate  
60x40x20cm  
2021**







**"omega.axon"**

**spraypainted steelsculpture  
100x170x70cm  
2021**



**"appendix vermiformis"**

**goldpigmented  
steelsculpture on  
wooden plate  
130x120x70cm  
2021**





**"delta.axon"**

**spraypainted  
steelsculpture  
100x80x70cm  
2021**

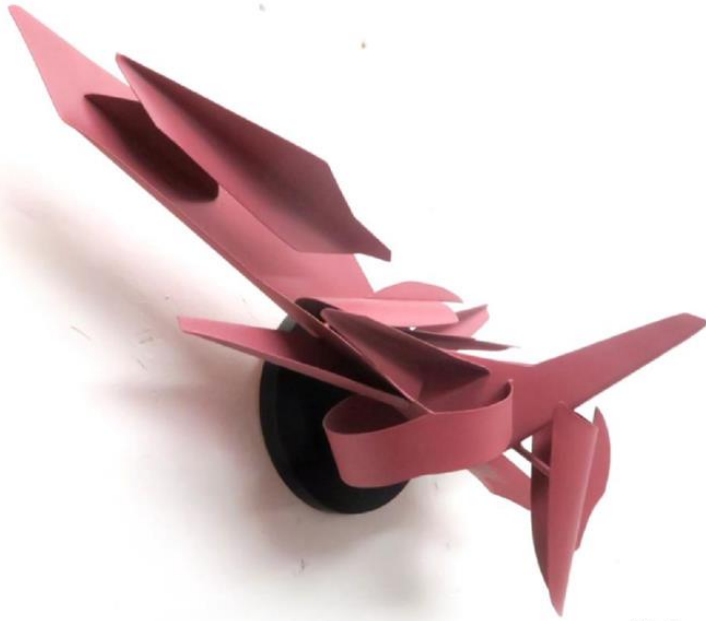


**"Vortex21p15"**

**spraypainted steelsculpture  
on wooden plate  
70x50x30cm  
2021**

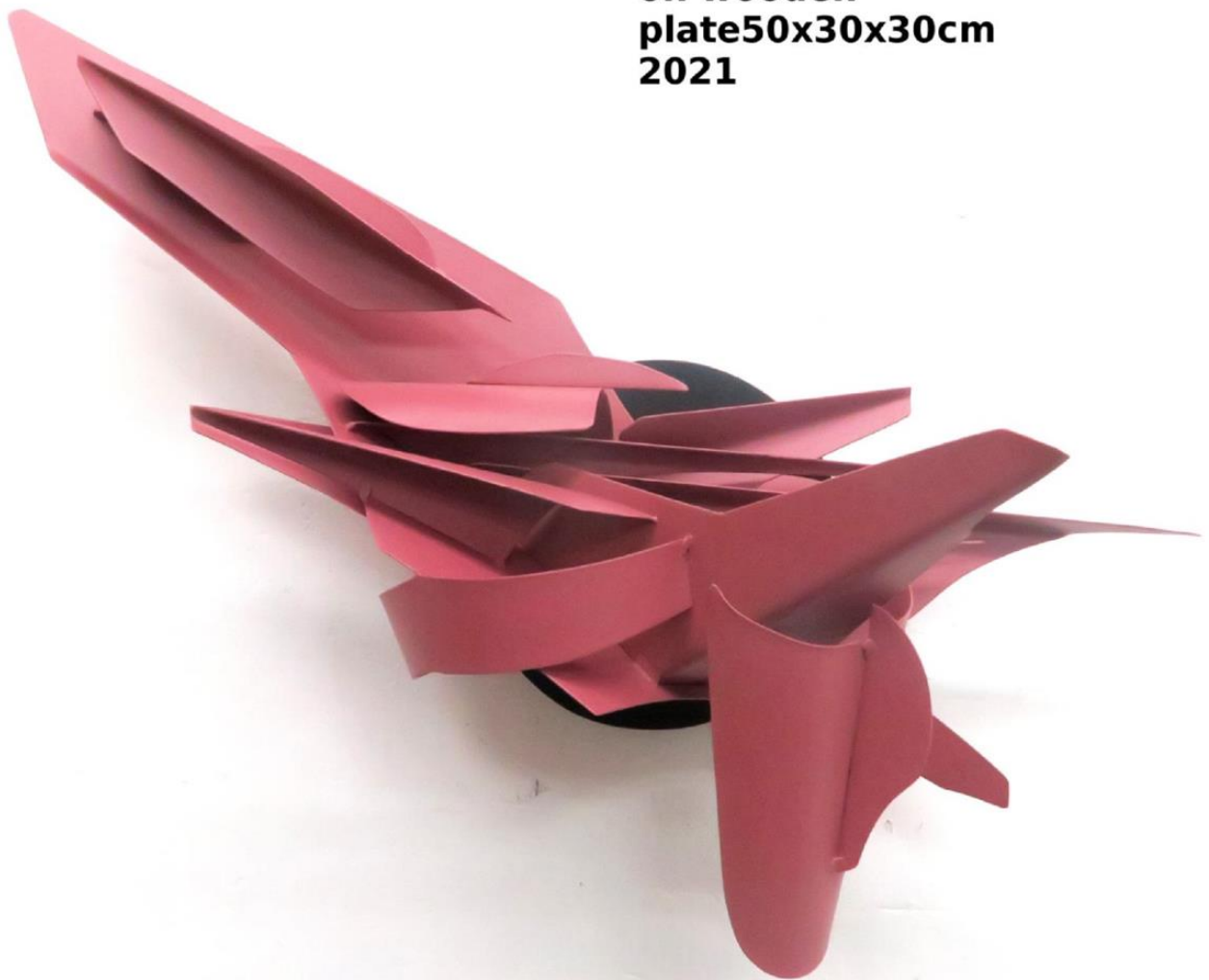






**"Vortex21p16"**

**spraypainted steelsculpture  
on wooden  
plate50x30x30cm  
2021**



**"Vortex21p14"**

**spraypainted steelsculpture  
on wooden plate  
60x40x30cm  
2021**

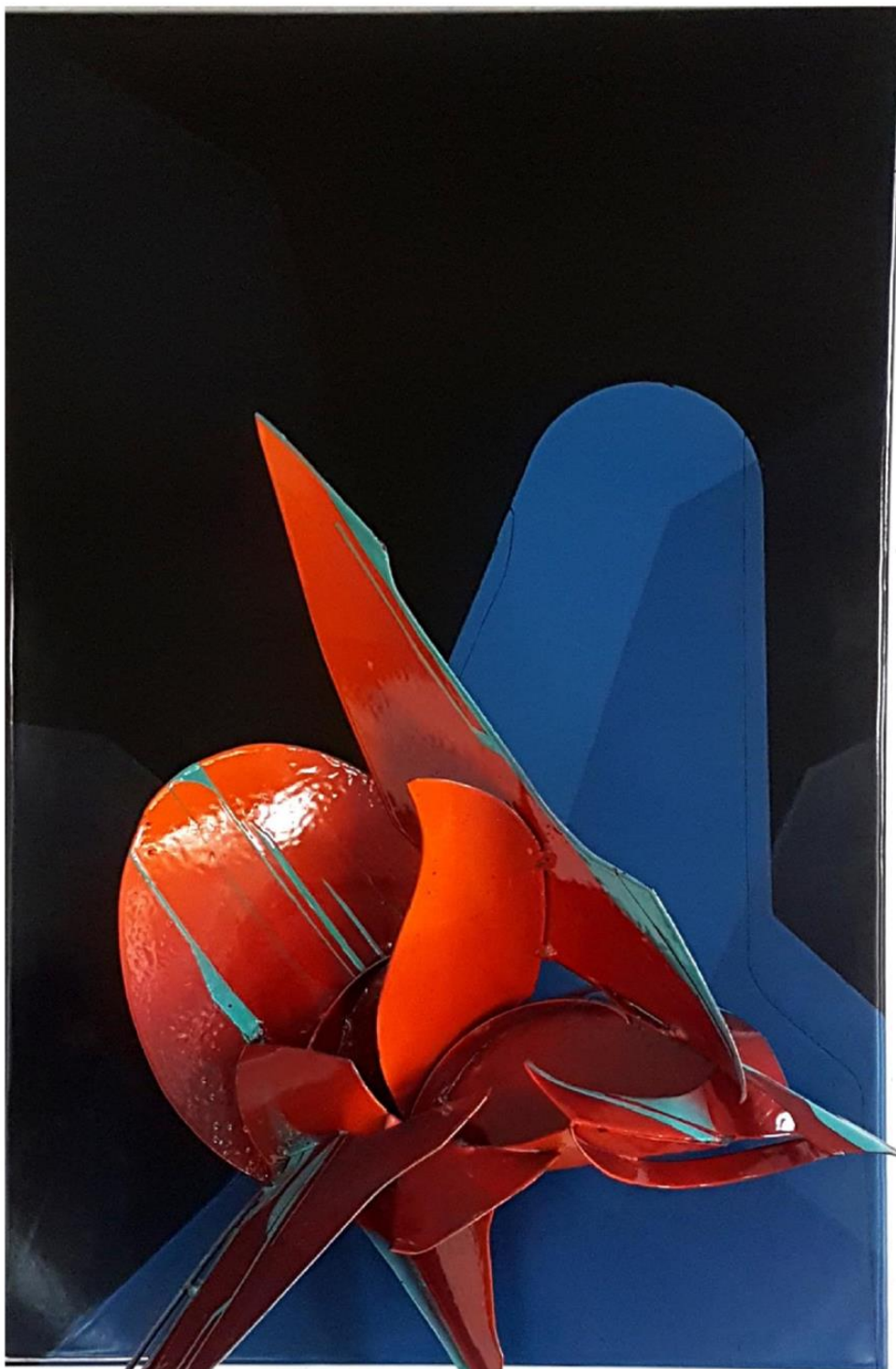




**"nucleolus maximus"**

**goldpigmented  
steelsculpture on  
wooden plate  
170x150x50cm  
2020**





**"dark matter"**

**emaille on steel  
95x60x40cm  
2019**



**"invaders come to kick back"**

**emaille on steel  
65x40x20cm  
2019**



